

陶瓷磨料（白色，蓝色）

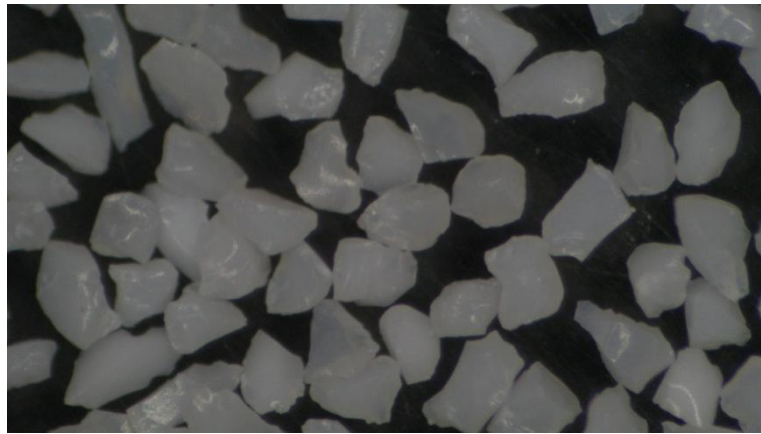
Ceramic abrasive (CA, BCA)

溶胶-凝胶法制备，特殊的微观结构打造出良好切割效果和持久寿命。

用途:用于大进给力和高效磨削，用于精密磨削和定型磨削。

prepared by sol-gel method , Special micro-structure creating a good cutting effect and durable life;

Use: used for large feeding force and high efficient grinding, used for precision grinding and shaping grinding.



白色陶瓷磨料

Chemical Composition (by weight %) 化学成分（以重量%计）	
Grit 粒度	Al2O3
#30-#220	99
#240-#2000	99

White Color Ceramic Abrasive

Chemical Composition (by weight %) 化学成分（以重量%计）	
Grit 粒度	Al2O3
#30-#220	99
#240-#2000	99

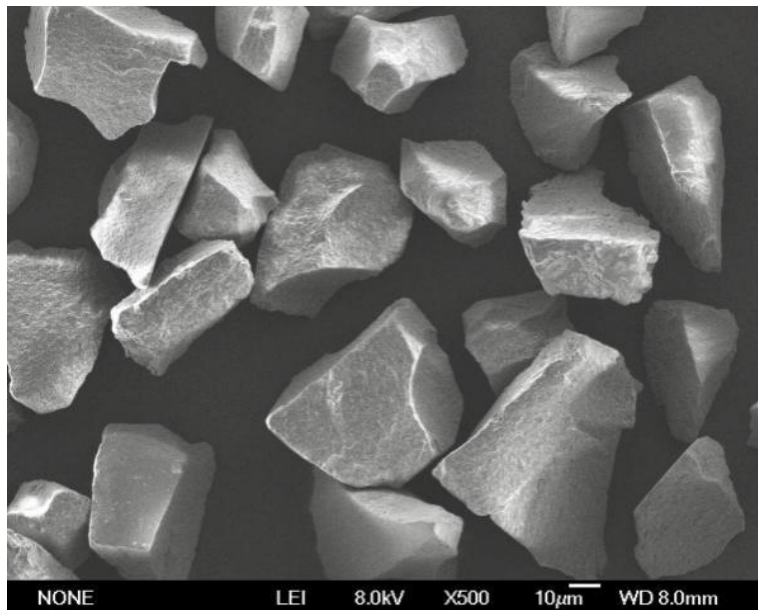


蓝色陶瓷磨料

Chemical composition (by weight %) 化学成分 (以重量%计)		
Grit 粒度	Al2O3	MgO
#30-#220	94-96	0.7-1.6
#240-#2000		

Blue color Ceramic Abrasive (BCA)

Chemical composition (by weight %) 化学成分 (以重量%计)		
Grit 粒度	Al2O3	MgO
#30-#220	94-96	0.7-1.6
#240-#2000		



陶瓷磨料微粉

我们可以生产 CA 和 BCA # 240-# 2000 的超细粉。

Micropowder of Ceramic Abrasive

Micropowder of Ceramic Abrasive #240-#2000 can be produced by us.